



Comparison between HikCentral VS iVMS-4200



1

System architecture & Capacity

2

Google Map

3

Access Control & ANPR

4

Maintainability



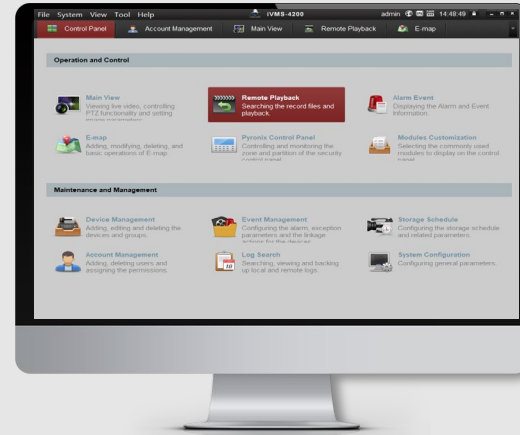
1.1 System architecture

System architecture: HikCentral can achieve multi-users management.

HikCentral supports Web Client, up to 200 Control Client/Mobile Client to achieve Multi-users Management.



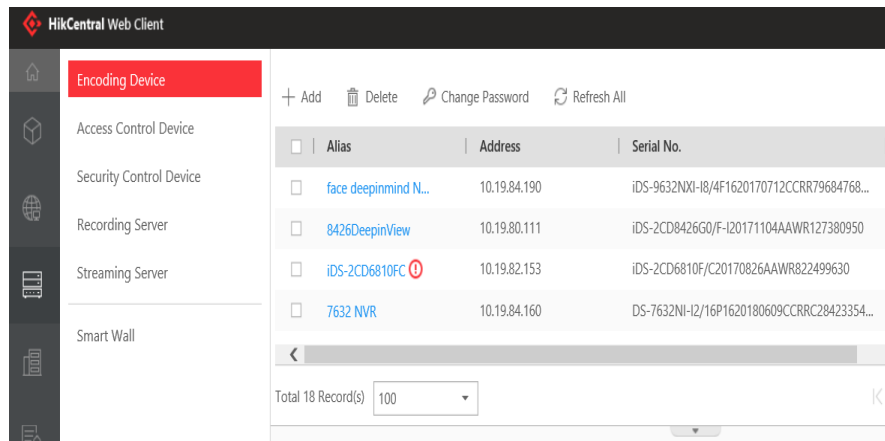
iVMS-4200 only supports one client software.



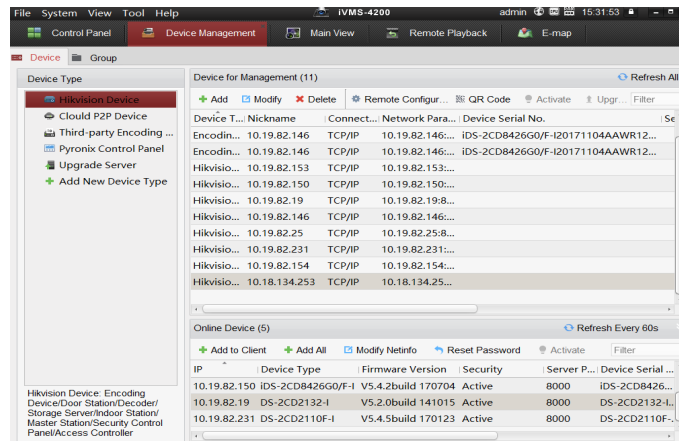
1.2 Capacity

Capacity: HikCentral can support large-scale project.

HikCentral supports up to 1024 encoding devices, up to 3000 channels. It also support ONVIF access.



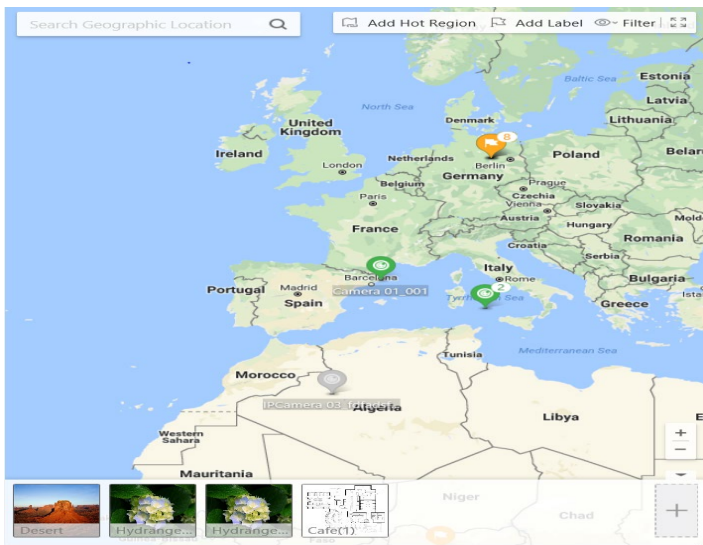
iVMS-4200 supports up to 256 encoding devices, up to 1024 channels. It can't support ONVIF access.



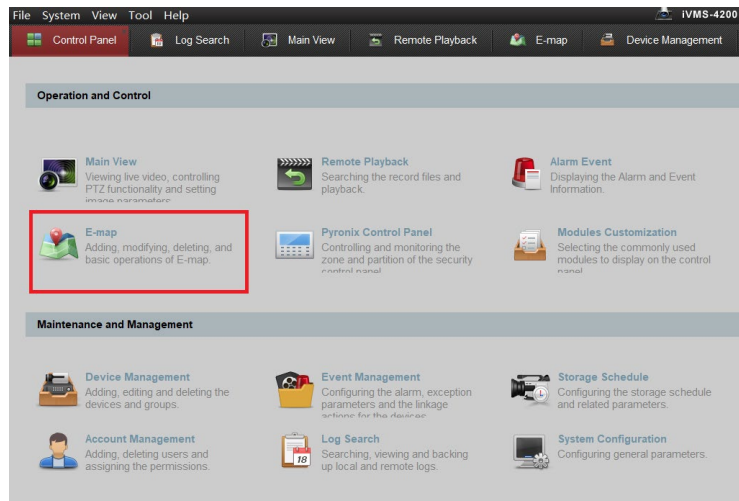
2 Google Map

Google Map: HikCentral can support Google Map.

HikCentral supports both Google map and E-map to locate sites and cammeras.



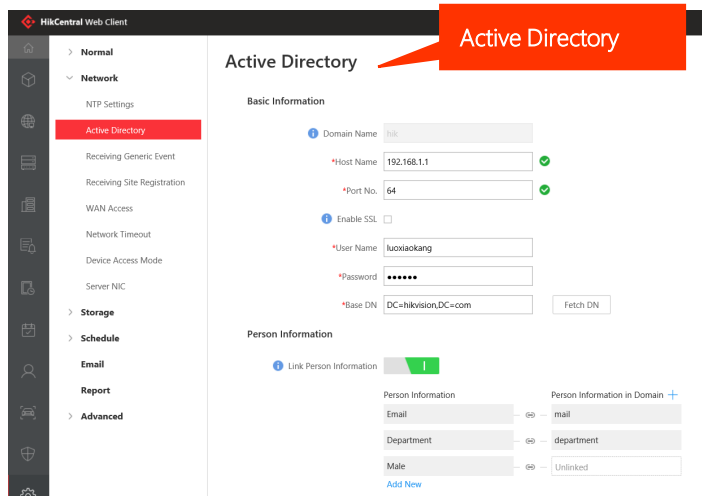
iVMS-4200 only supports E-map.



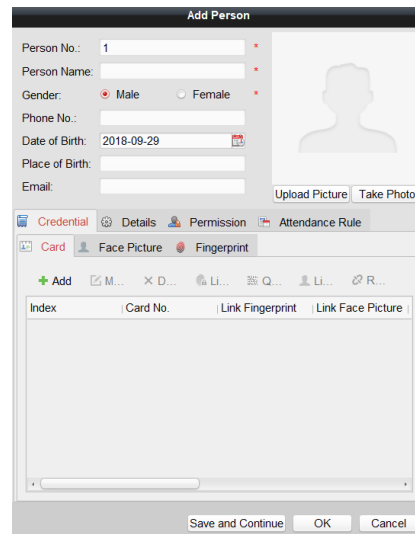
3.1 Access Control

Access Control: HikCentral integrates more functions than 4200.

HikCentral integrates Active Directory.



iVMS-4200 don't support Active Directory.



3.2 ANPR

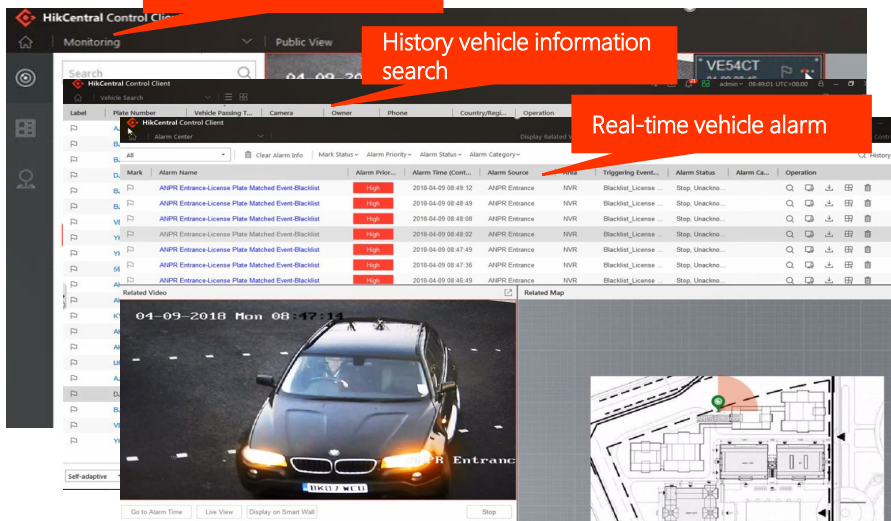
ANPR: ANPR of HikCentral is dedicated for entrance/exit management.

HikCentral can provide License plate recognition, History vehicle information search, Real-time vehicle alarm for entrance/exit management.

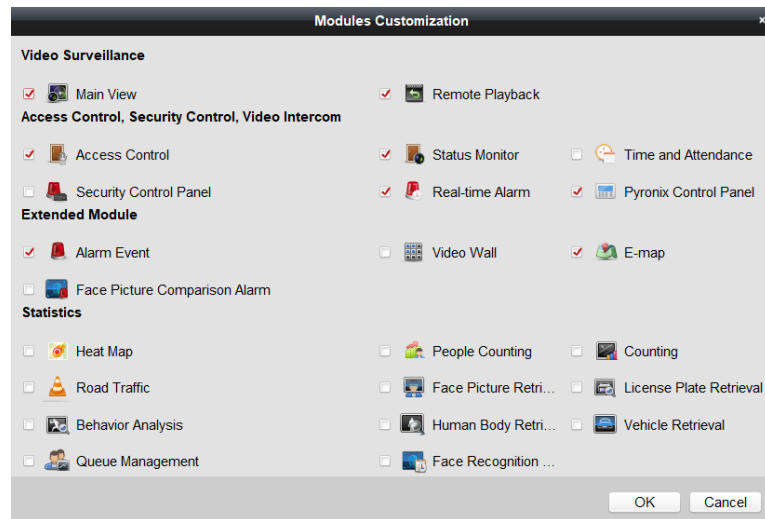
License plate recognition

History vehicle information search

Real-time vehicle alarm



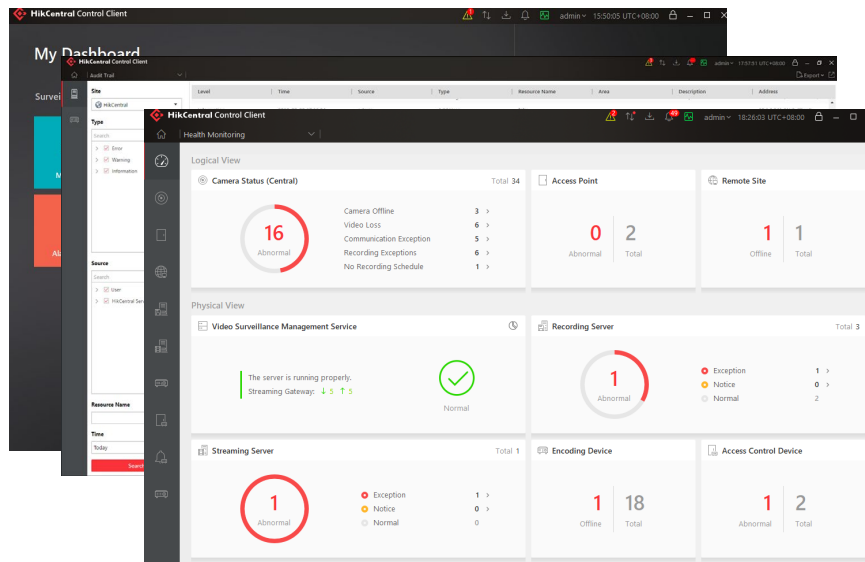
iVMS-4200 can't provide entrance/exit management.



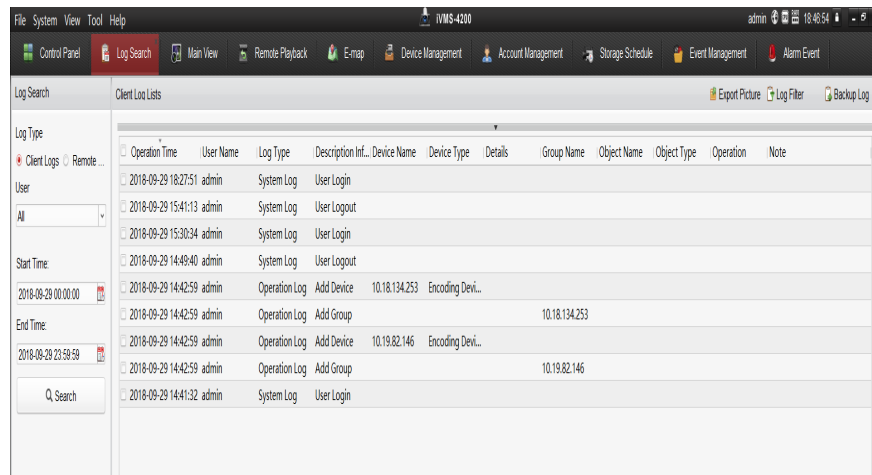
4 Maintainability

Maintainability: HikCentral is more easier to maintain.

HikCentral is able to search Error /Warning/ Info Log with more detailed info and support Health Monitoring to monitor the whole system status. Audit Trail(1.3) and Health Monitoring make HikCentral very convenient to maintain.



iVMS-4200 only support simple log search and don't support health Monitoring.



HIKVISION



THANKS !

First Choice for Security Professionals