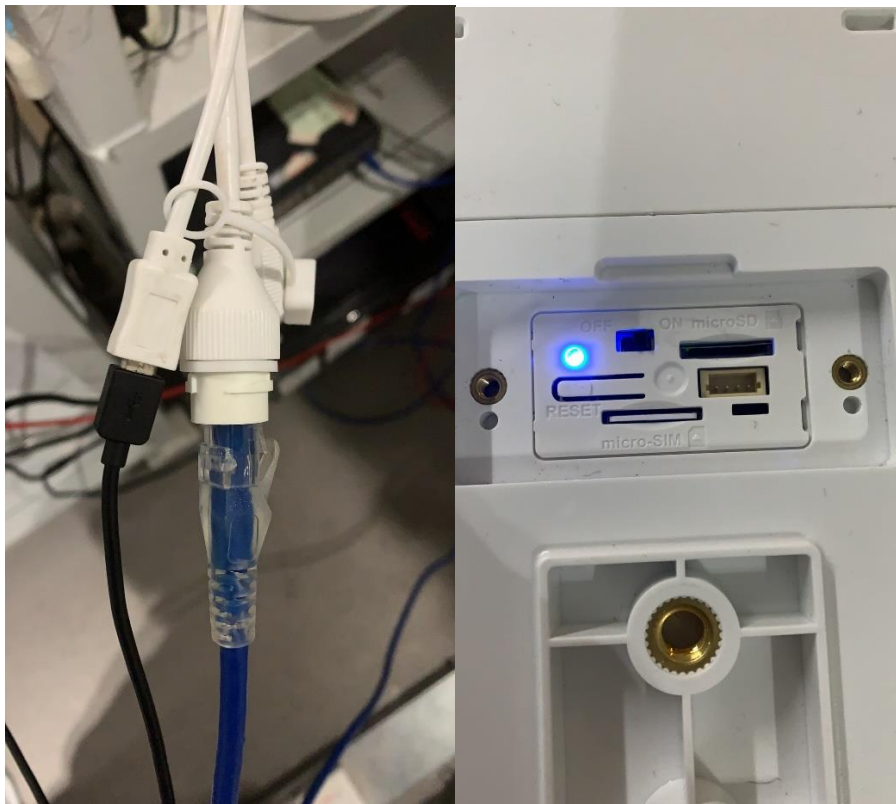




How to add solar camera on NVR through ISUP protocol

How to add solar camera on NVR through ISUP protocol

- 1. Connect the camera to the power supply and connect the network cable, insert the 4G card, and wait for the camera light to flash slowly. NVR is updated to support the firmware of solar camera. Ensure that the camera and router are under the same router network segment, and the router is connected to the external network.**



2. Open SADP, find NVR and solar camera, and double-click to open it.

序号	设备类型	激活状态	IP地址	端口	服务器端口	软件版本	IP4网关	HTTP端口	设备序列号	子网掩码	物理地址
001	DS-7616NI-I2	已激活	192.168.0.120	8000	8443	V4.40.016build 2...	192.168.0.1	80	DS-7616NI-I21620191205CCRRD96...	255.255.255.0	84-9e...
002	DS-7732NI-I4/16P(B)	已激活	192.168.0.111	8000	8443	V4.50.000build 2...	192.168.0.1	80	DS-7732NI-I4/16P(B)1620190828CC...	255.255.255.0	68-6d...
003	DS-6700NI-S	已激活	192.168.0.118	8000	N/A	V4.40.360build 2...	192.168.0.1	80	DS-6700NI-S0820200901CCRRE720...	255.255.255.0	ac...
004	DS-2CD2346G1-I/SL	已激活	192.168.0.12	8000	8443	V5.6.0build 2006...	192.168.0.1	80	DS-2CD2346G1-I/SL20190726AAWR...	255.255.255.0	bc...
005	IPC-B129H	已激活	192.168.0.198	8000	N/A	V5.5.114build 20...	192.168.0.1	80	IPC-B129H20191218AAWRE02429596	255.255.255.0	98-df...
006	DS-2DE4A425IW-DE	已激活	192.168.0.18	8000	8443	V5.6.14build 190...	192.168.0.1	80	DS-2DE4A425IW-DE20191123AAW...	255.255.255.0	98-df...
007	DS-7608N-E1/8P-V30C0	已激活	192.168.0.144	8000	N/A	V4.30.122build 2...	192.168.0.1	80	DS-7608N-E1/8P-V30C0082021022...	255.255.255.0	c0-51...
008	DS-K1T343MFX	已激活	192.168.0.192	8000	N/A	V3.3.0build 2107...	192.168.0.1	80	DS-K1T343MFX20210716V030300E...	255.255.255.0	2c-a5...
009	DS-PWA32-HSR	已激活	192.168.0.196	8000	N/A	V1.0.7build 2012...	192.168.0.1	80	DS-PWA32-HSR20190731AAWRQ00...	255.255.255.0	98-8f...
010	DS-PWA96-M-WE	已激活	192.168.0.100	8000	N/A	V1.2.4build 2106...	192.168.0.1	80	DS-PWA96-M-WE20200709AAWRQ...	255.255.255.0	80-9f...
011	DS-2XS2T41G0-ID/4G/...	已激活	192.168.0.142	8000	8443	V5.5.120build 21...	0.0.0.0	80	DS-2XS2T41G0-ID/4G/C045052021...	255.255.255.0	4c-f5...
012	DS-2CV1021G1-IDW	已激活	169.254.41.72	8000	N/A	V5.5.120build 20...	0.0.0.0	80	DS-2CV1021G1-IDW20200605AAW...	255.255.0.0	80-9f...
013	DS-PWA96-M-WE	已激活	192.168.0.110	8000	N/A	V1.2.4build 2106...	192.168.0.1	80	DS-PWA96-M-WE20200729AAWRQ...	255.255.255.0	ec-9c...

3. Open the virtual server settings page (port mapping) of the router



4. In the web end network setting of NVR, record the external port of port 80 in NAT and the following four ports in ISUP service setting

Enable UPnP™

Port Mapping Mode: Manual

Port Type	External Port	External IP Address	Internal Port	Status
HTTP	80	36.24.25.112	80	The ports conflict.
RTSP	554	36.24.25.112	554	The ports conflict.
Server Port	8000	36.24.25.112	8000	The ports conflict.
HTTPS	443	36.24.25.112	443	The ports conflict.
Enhanced Servi...	8443	36.24.25.112	8443	The ports conflict.

Save

©2021 Hikvision Digital Technology Co., Ltd. All Rights Reserved.

Enable

Proxy Service Port: 7660

Alarm Service Port: 7661

Media Live View Port: 7662

Media Playback Port: 7663

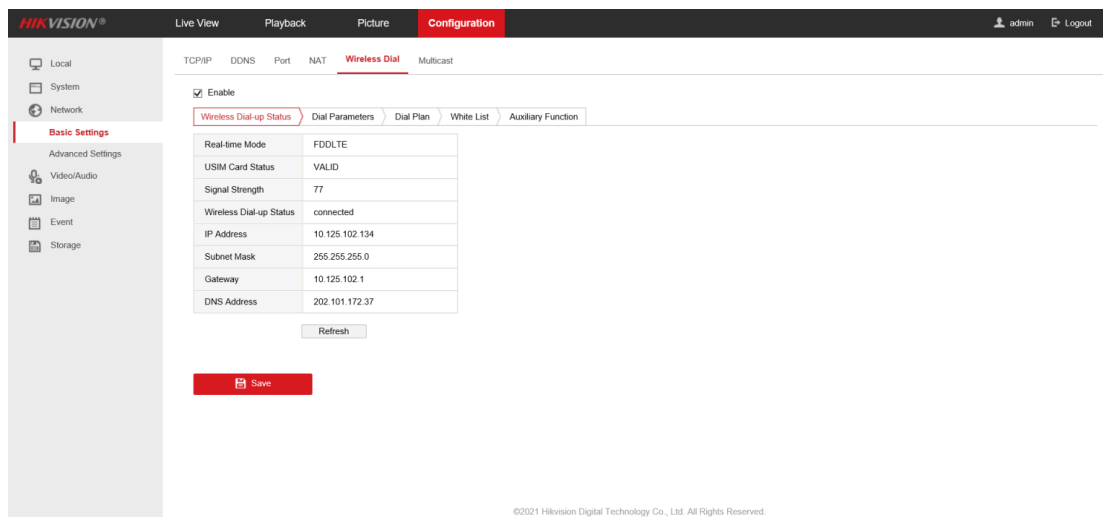
Save

©2021 Hikvision Digital Technology Co., Ltd. All Rights Reserved.

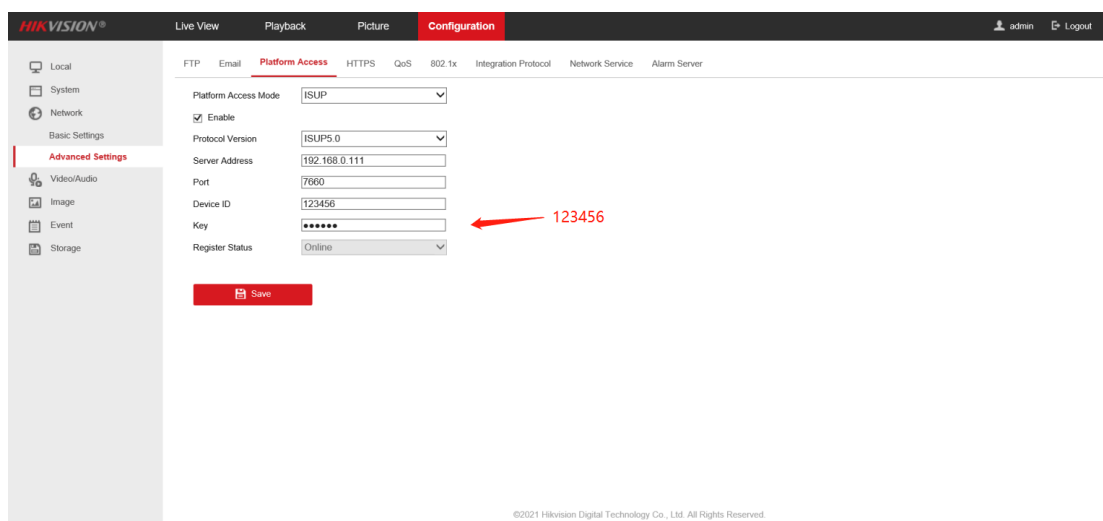
5. Port mapping: map the five ports just recorded to the outside. The blue box is the port just recorded, and the green box is the external port. The ports in the green box can be set at will. After setting, record it.



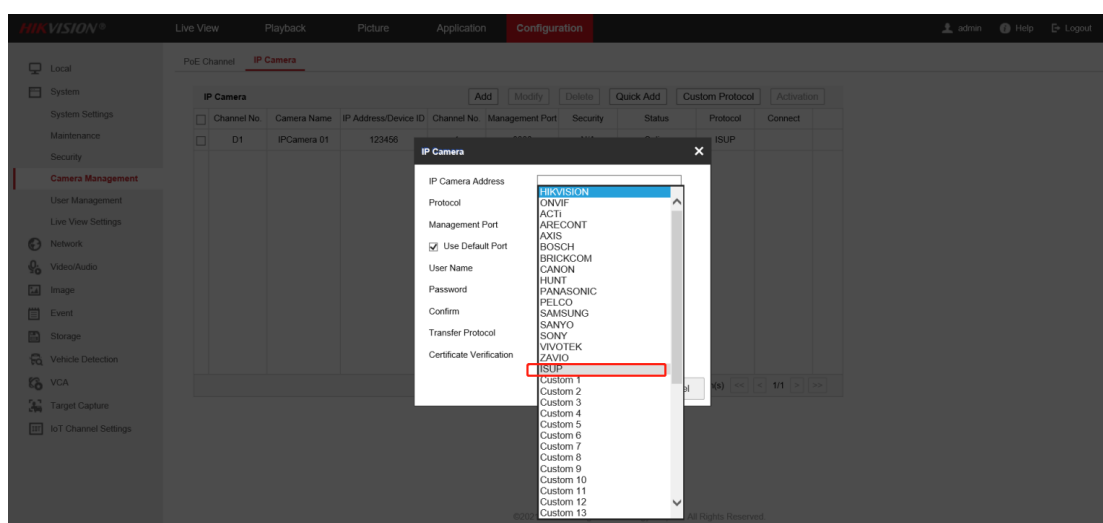
6. To the camera web page, first check whether the 4G connection is normal.



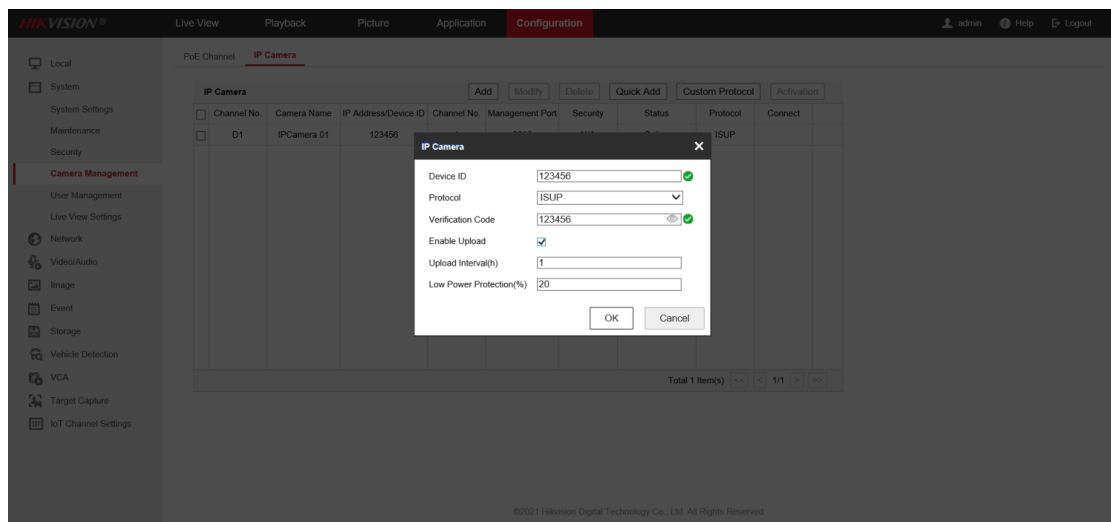
7. Configure the ISUP protocol on the web side of the camera, the server address is the IP address of NVR, and the port is the external port corresponding to 7660 in the green box. The ID and password of the camera can be configured at will. If there are multiple cameras, the ID should not be the same. Save after configuration.



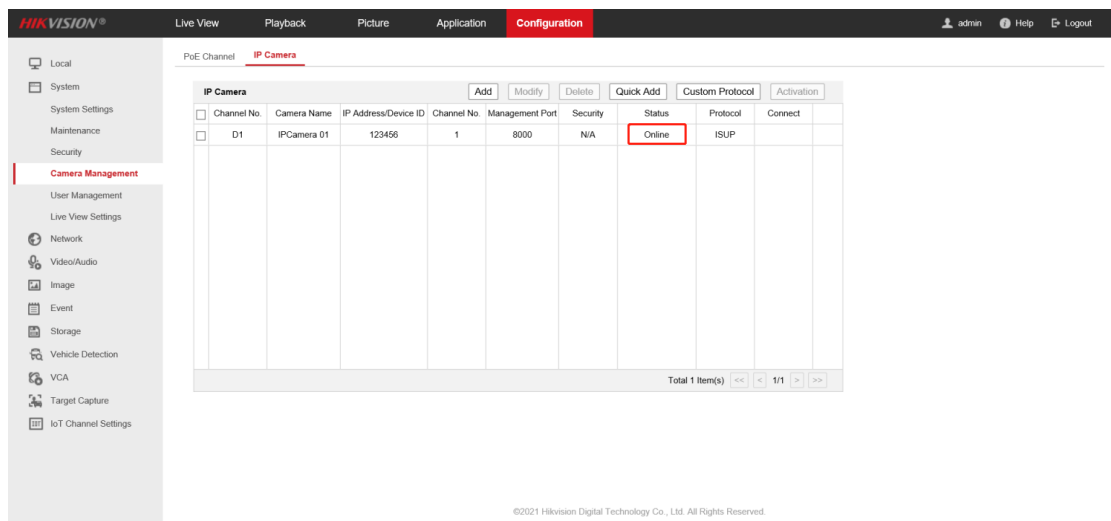
8. Go to the web page of NVR, add a camera, and select ISUP as the protocol

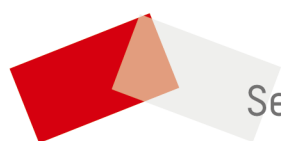


9. Fill in the device ID and password just set at the camera end



10. Refresh the page and see that the camera status is online, that is, the addition is successful.





See Far, Go Further