



VEID ENTERPRISES PTE LTD
1 Goldhill Plaza #03-21
Singapore 308899.

Tel: +65 6599 6805 Fax: +65 6251 1287
Singapore 308899.
Email: sales@veid.net

HikVision AX Pro Kit Setup Procedure

1. Before setup, please download the Hik-Connect app from Apple App Store/Google Play Store.



Hik-Connect App

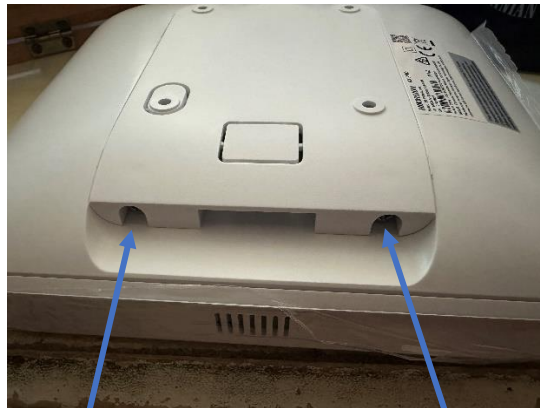
2. After installation of the Hik-Connect app, Please register for an account and log in.

3. The AX Pro Kit consists of **5 parts** :

- a. **AX Pro Control Device**
- b. **Wireless Magnet Detector**
- c. **Wireless PIR Detector**
- d. **Wireless Keyfob**
- e. **Wireless LED Keypad**

Step 1 : AX Pro Control Device

4. Install the AX Pro Control Device. Unscrew the screw and cover. Put in the power cable and connect the ethernet cable to the router. Turn on the power.



Unscrew the 2 screws

VEID



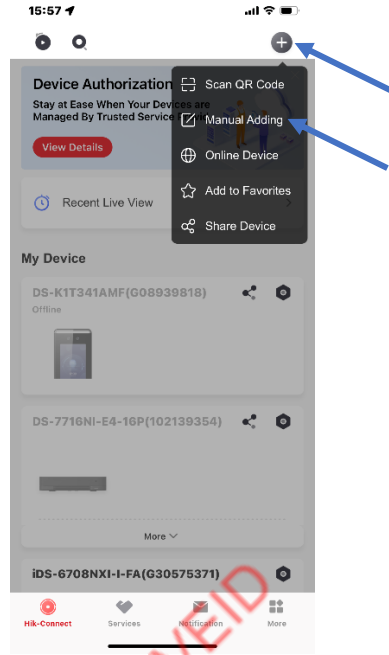
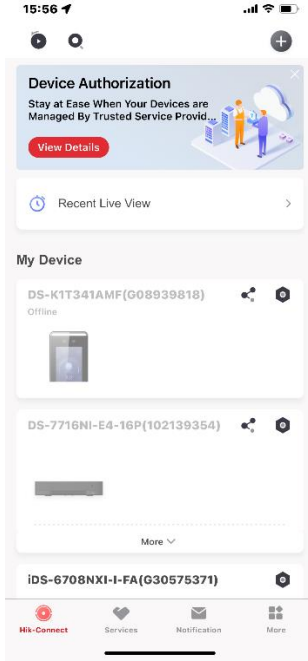
VEID ENTERPRISES PTE LTD
1 Goldhill Plaza #03-21
Singapore 308899.

VEID

VEID

Tel: +65 6599 6805 Fax: +65 6251 1287
Singapore 308899.
Email: sales@veid.net

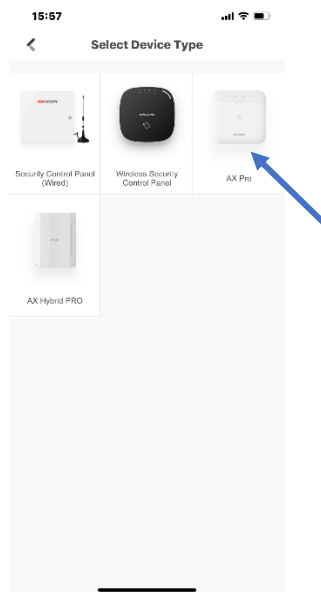
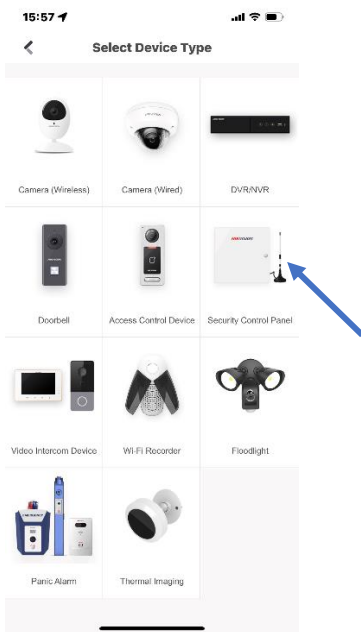
5. Run the Hik-Connect App. Press the “+” button to select “Manual Adding”.



VEID

VEID

6. Select Security Control Panel and AX Pro.



VEID

VEID

VEID

VEID



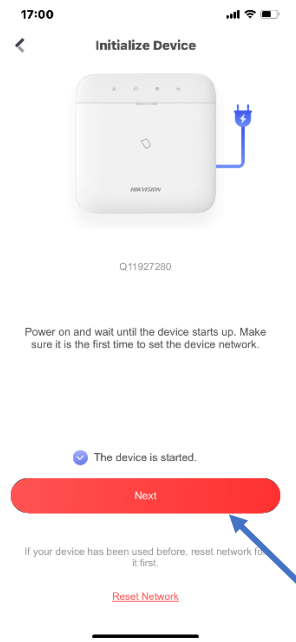
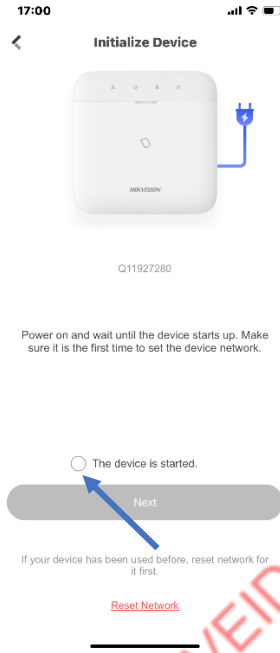
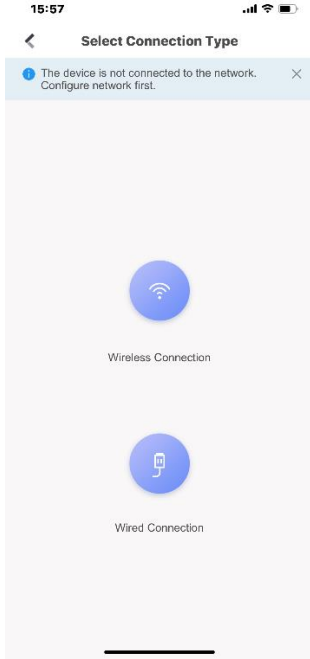
VEID ENTERPRISES PTE LTD
1 Goldhill Plaza #03-21
Singapore 308899.

VEID

VEID

Tel: +65 6599 6805 Fax: +65 6251 1287
Singapore 308899.
Email: sales@veid.net

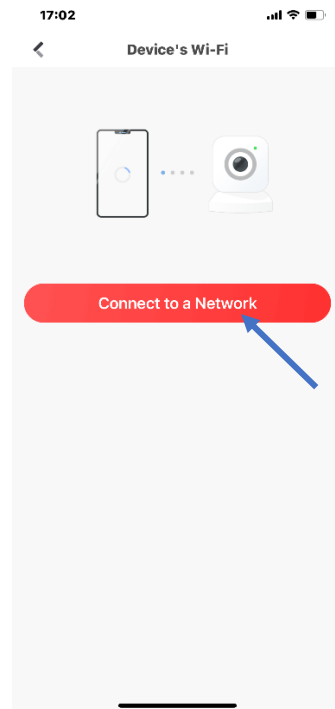
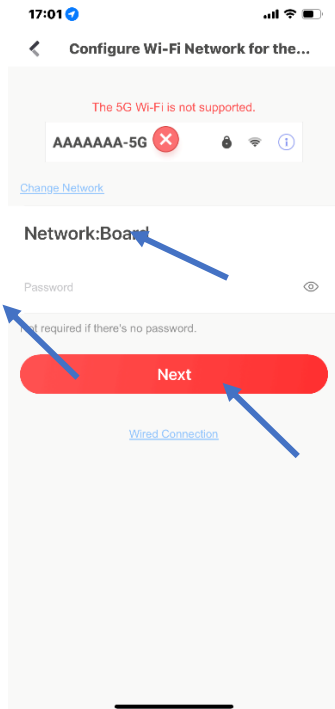
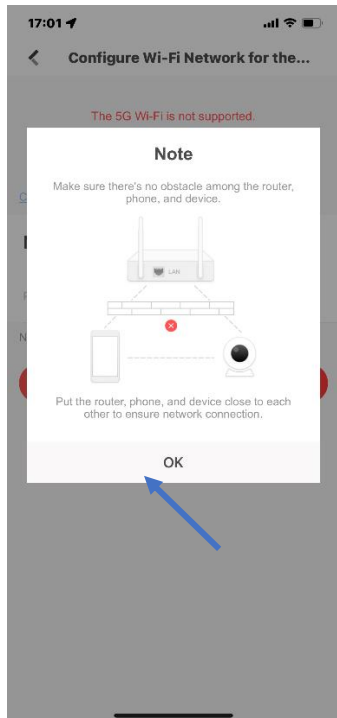
7. Select Wireless Connection.



VEID

VEID

VEID



8.

VEID

VEID

VEID

VEID

VEID

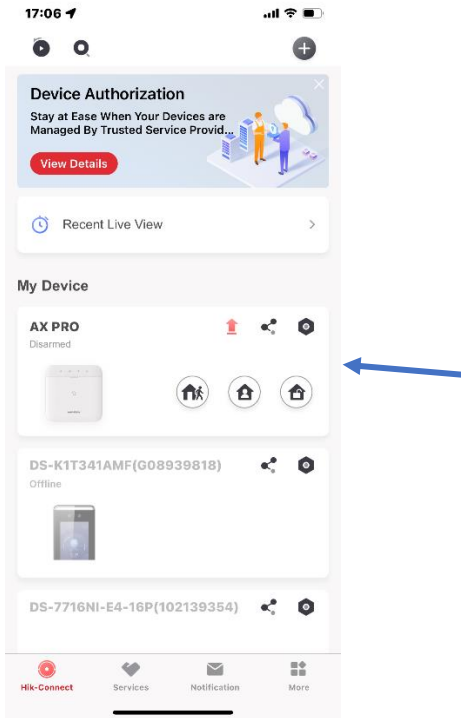
VEID



VEID ENTERPRISES PTE LTD
1 Goldhill Plaza #03-21
Singapore 308899.

Tel: +65 6599 6805 Fax: +65 6251 1287
Singapore 308899.
Email: sales@veid.net

9. AX Pro device successfully setup.



VEID

VEID

VEID

Step 2 : Install the Wireless Magnet Detector

10. Add the Wireless Magnet Detector into AX Pro network. Before adding the detector, remove the back cover, turn the switch to "ON", then cover back the back cover.



VEID

VEID

VEID

VEID

VEID

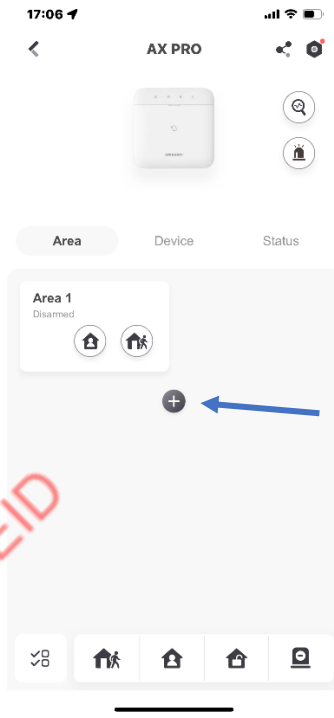
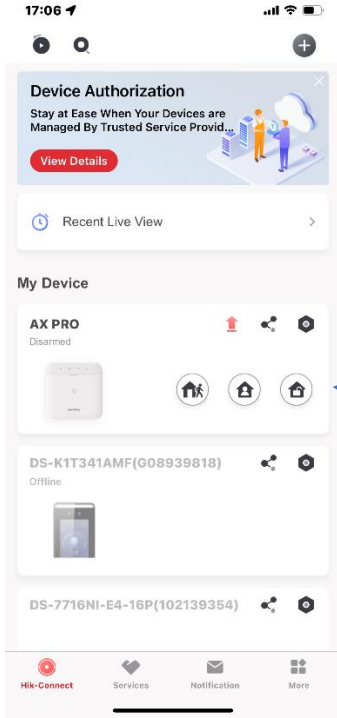
VEID



VEID ENTERPRISES PTE LTD
1 Goldhill Plaza #03-21
Singapore 308899.

Tel: +65 6599 6805 Fax: +65 6251 1287
Singapore 308899.
Email: sales@veid.net

11. Select the AX Pro device. Press the “+” button to add new devices to the network. In this case, add the wireless magnet detector. Scan the QR Code at the back of the device.



VEID

VEID

VEID

VEID

VEID

VEID

VEID



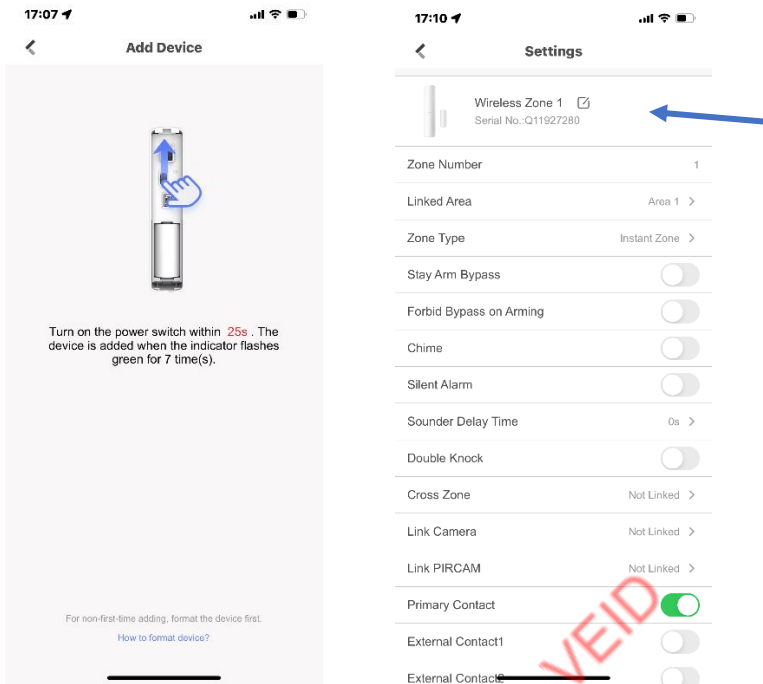
VEID ENTERPRISES PTE LTD
1 Goldhill Plaza #03-21
Singapore 308899.

VEID

VEID

Tel: +65 6599 6805 Fax: +65 6251 1287
Singapore 308899.
Email: sales@veid.net

12. The Wireless Magnet Detector is added successfully to the AX Pro network.



VEID

VEID

Step 3 : Wireless PIR Detector

13. Before installing, remove the screw, open the back cover, turn the switch to "ON" mode, then put back the back cover.



14. To add the Wireless PIR Detector into the AX Pro network, repeat the steps to install from step 11 to step 12.

VEID

VEID

VEID



VEID ENTERPRISES PTE LTD
1 Goldhill Plaza #03-21
Singapore 308899.

Tel: +65 6599 6805 Fax: +65 6251 1287
Singapore 308899.
Email: sales@veid.net

Step 4 : Wireless Keyfob

15. To add the Wireless Keyfob into the AX Pro network, repeat the steps to install from step 11 to step 12.

Step 5 : Wireless LED Keypad

16. Before installing, remove the screw, open the back cover, turn the switch to “ON” mode, then put back the back cover.



17. To add the Wireless LED Keypad into the AX Pro network, repeat the steps to install from step 11 to step 12.

18. The AX Pro Kit is ready to use.